

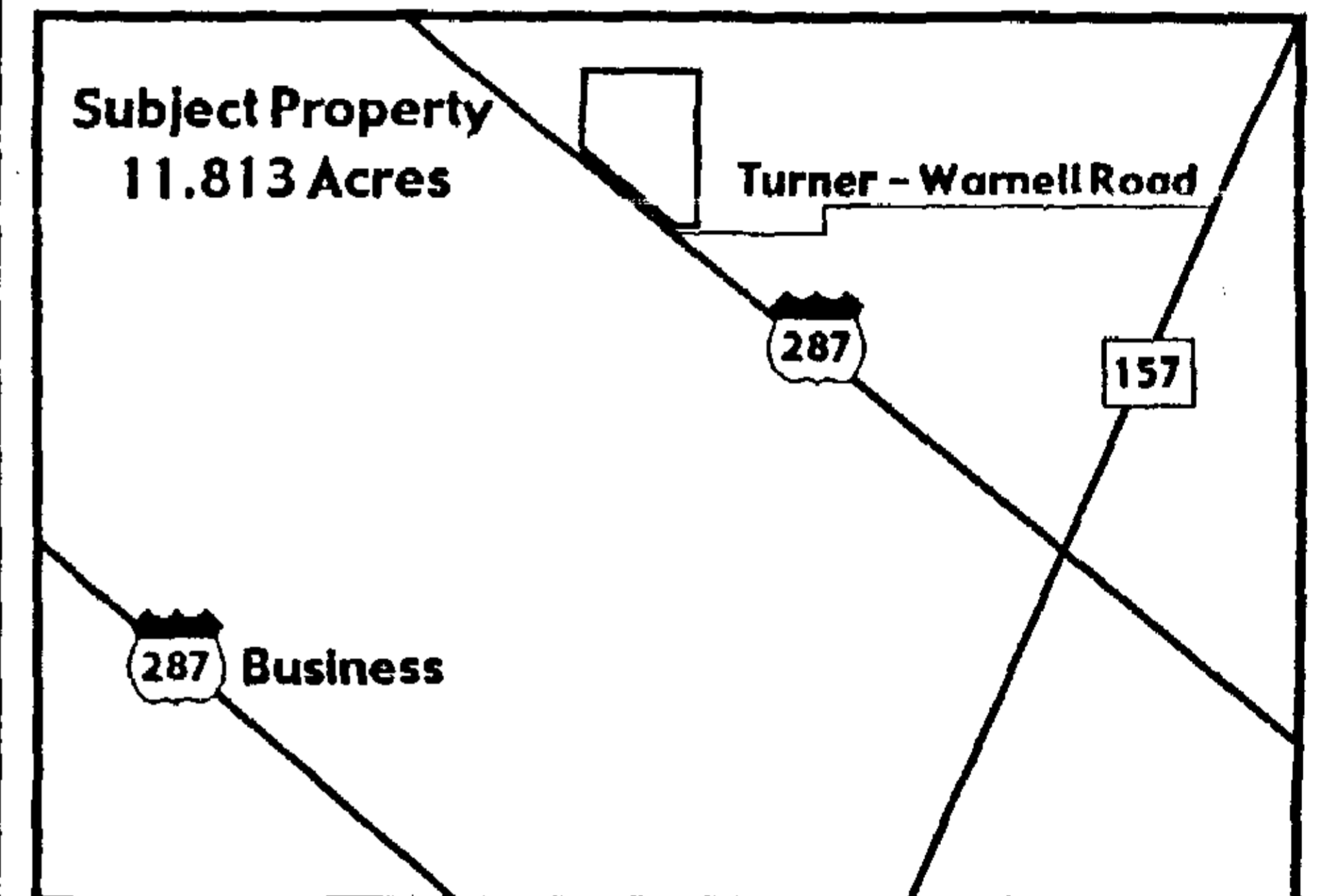
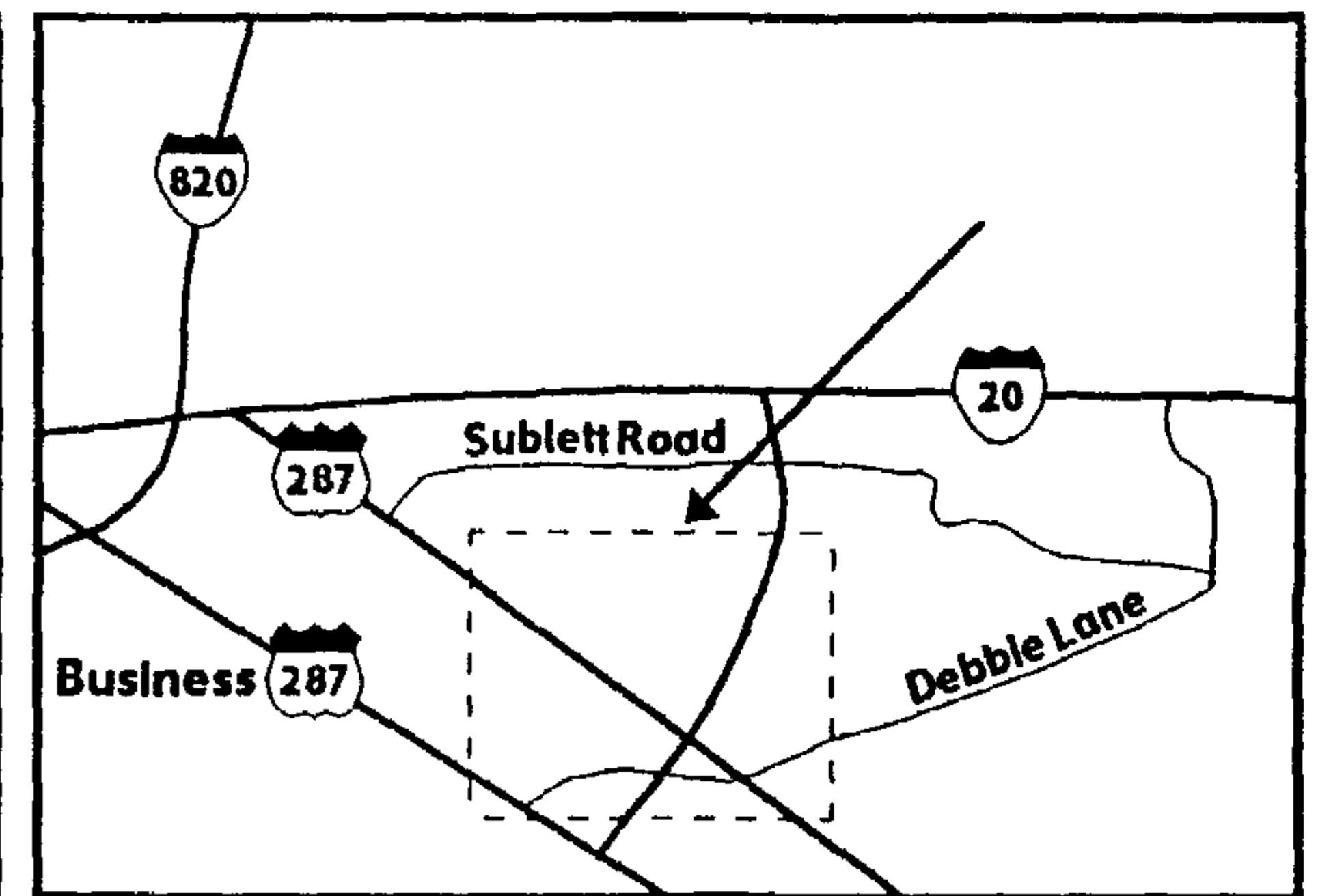
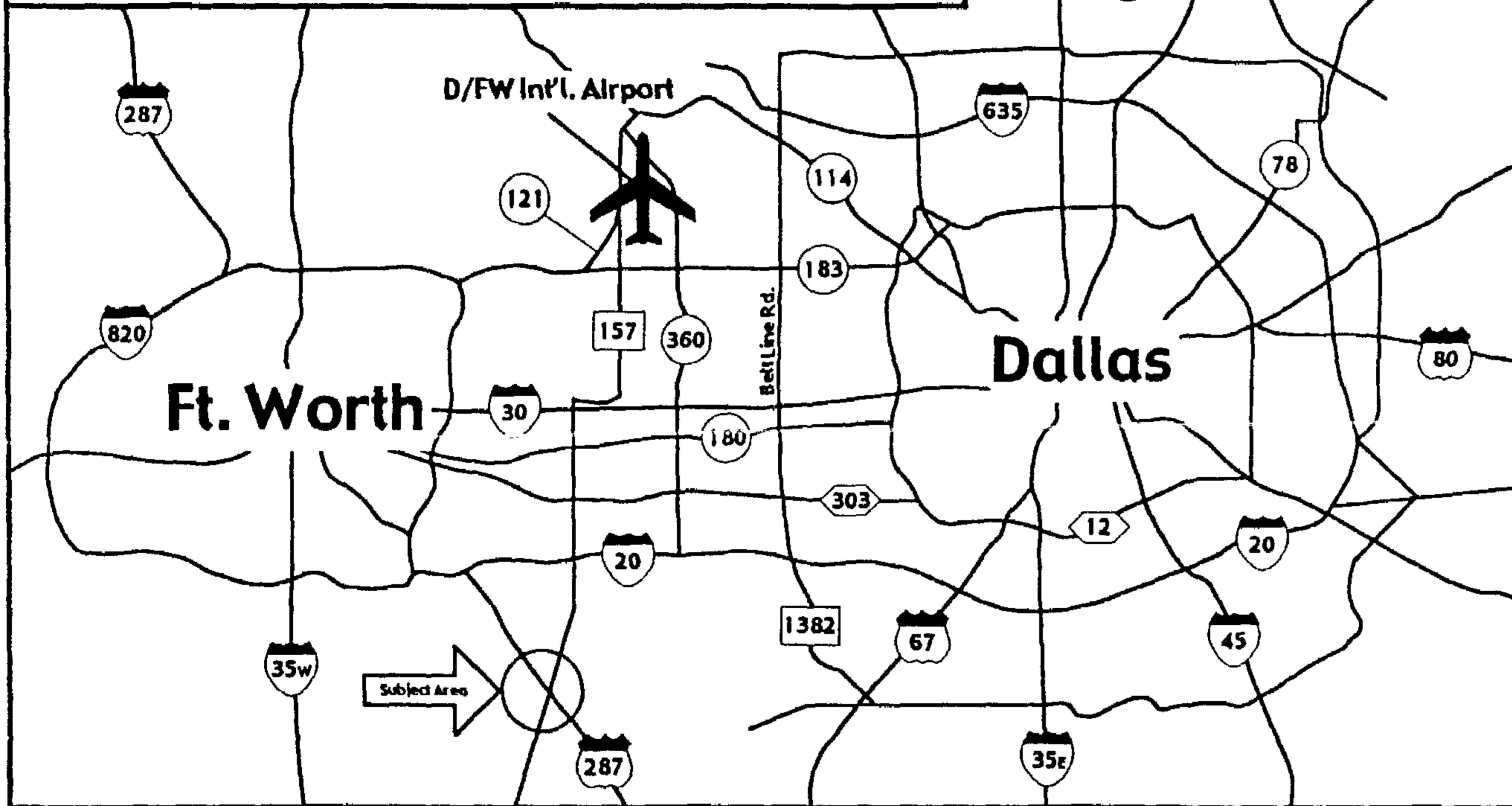
W.R. Rose Investments, Inc.

5440 Harvest Hill, Suite 250

Dallas, Texas 75230

(214) 954-1100 • FAX (214) 954-0011

11.813 Acres - Commercial - Arlington, Texas



SIZE

11.813 Acres or 514,574.28 square feet.

FRONTAGE

970 feet on U.S. 287
43.95 feet on Turner-Warnell Rd.

TOPOGRAPHY

Flat.

LOCATION

Northeast corner of Turner-Warnell Road and U.S. 287 in Arlington, Tarrant County, Texas.

ZONING

Commercial • B-1 & LB

UTILITIES

Water - A 16" in Turner-Warnell Rd.

Sewer - Available at the property line.

TOPOGRAPHY

Approximately \$3,000 annually.

Telephone, Electricity, and Natural Gas are all available on the subject property.

ALL INFORMATION IS SUBJECT TO ERRORS, OMISSION OR CHANGES IN CONDITIONS, OR WITHDRAWAL WITHOUT NOTICE.

11.813 Acres

Arlington, TX



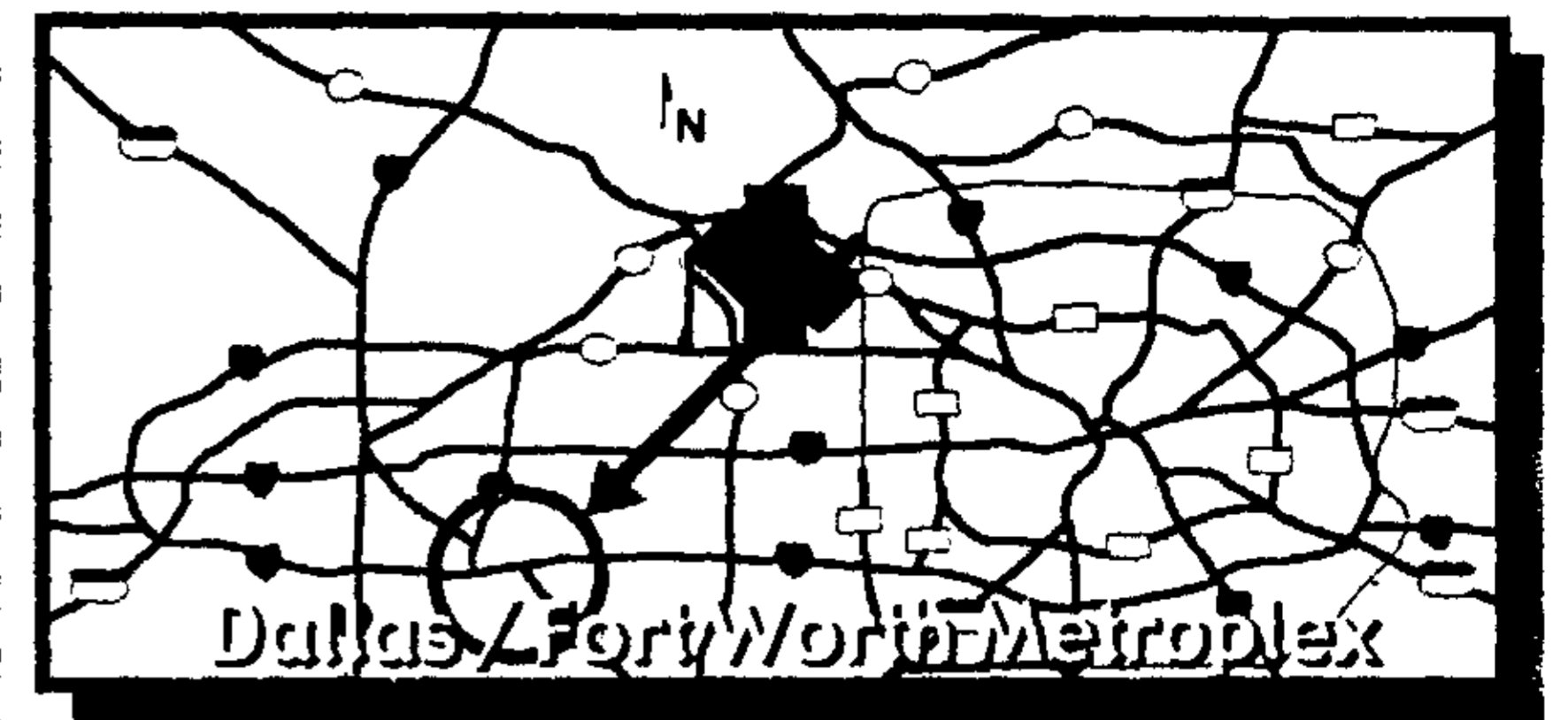
W. R. Rose Investments, Inc.

5440 Harvest Hill, Suite 250

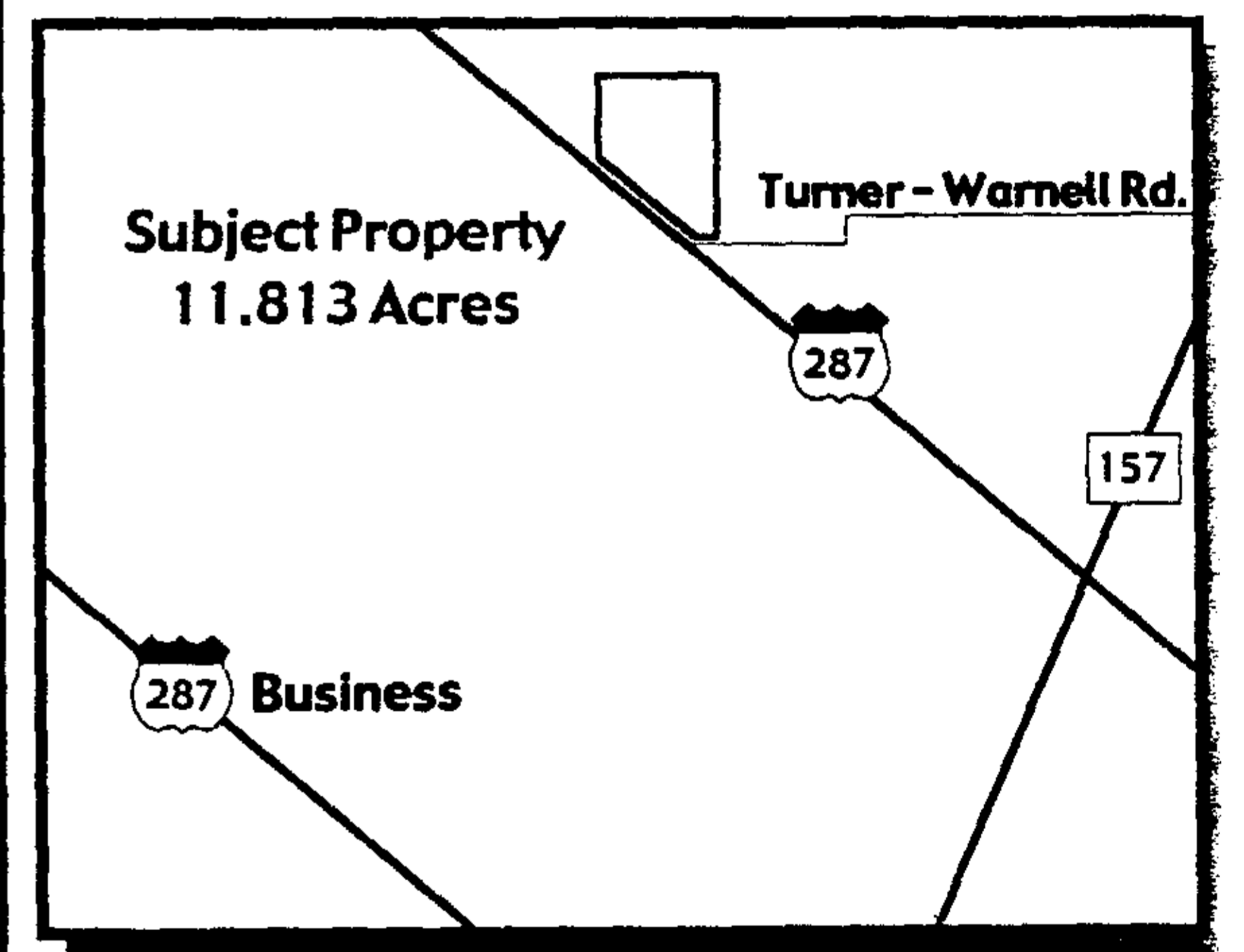
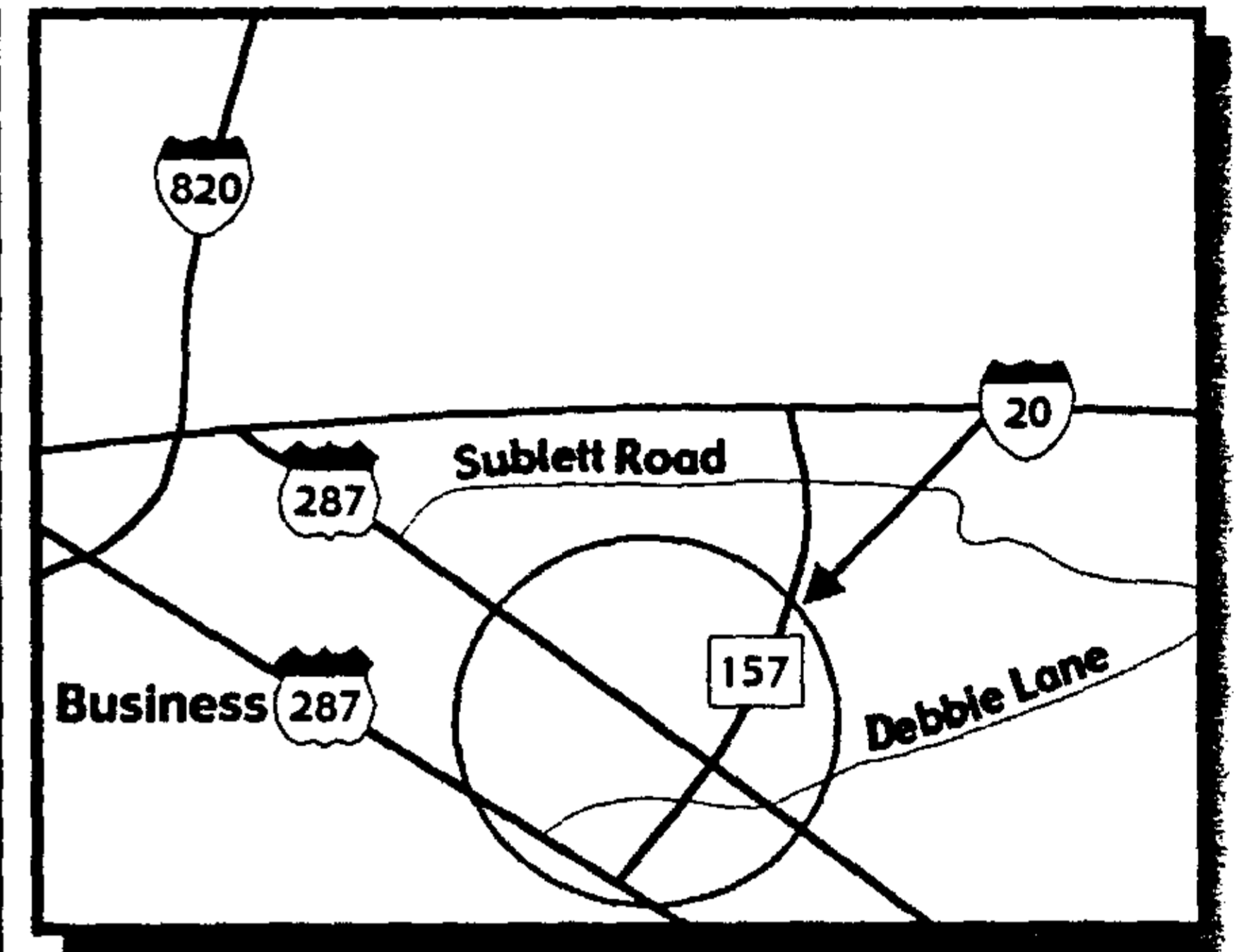
Dallas, Texas 75230

(214) 954-1100 • FAX (214) 954-0011

D/FW AIRPORT



Dallas/Fort Worth Metroplex



SIZE

11.813 Acres or 514,574.28 square feet.

ZONING

Commercial • B-1 & LB.

FRONTAGE

970 feet on U.S. 287.

43.95feete on Turner-Warnell Rd.

LOCATION

Northeast corner of Turner-Warnell Road and U.S. 287 in Arlington, Tarrant County, Texas.

TOPOGRAPHY

Flat.

UTILITIES

Water - A 16" in Turner-Warnell Rd.

Sewer - Available at the property line.

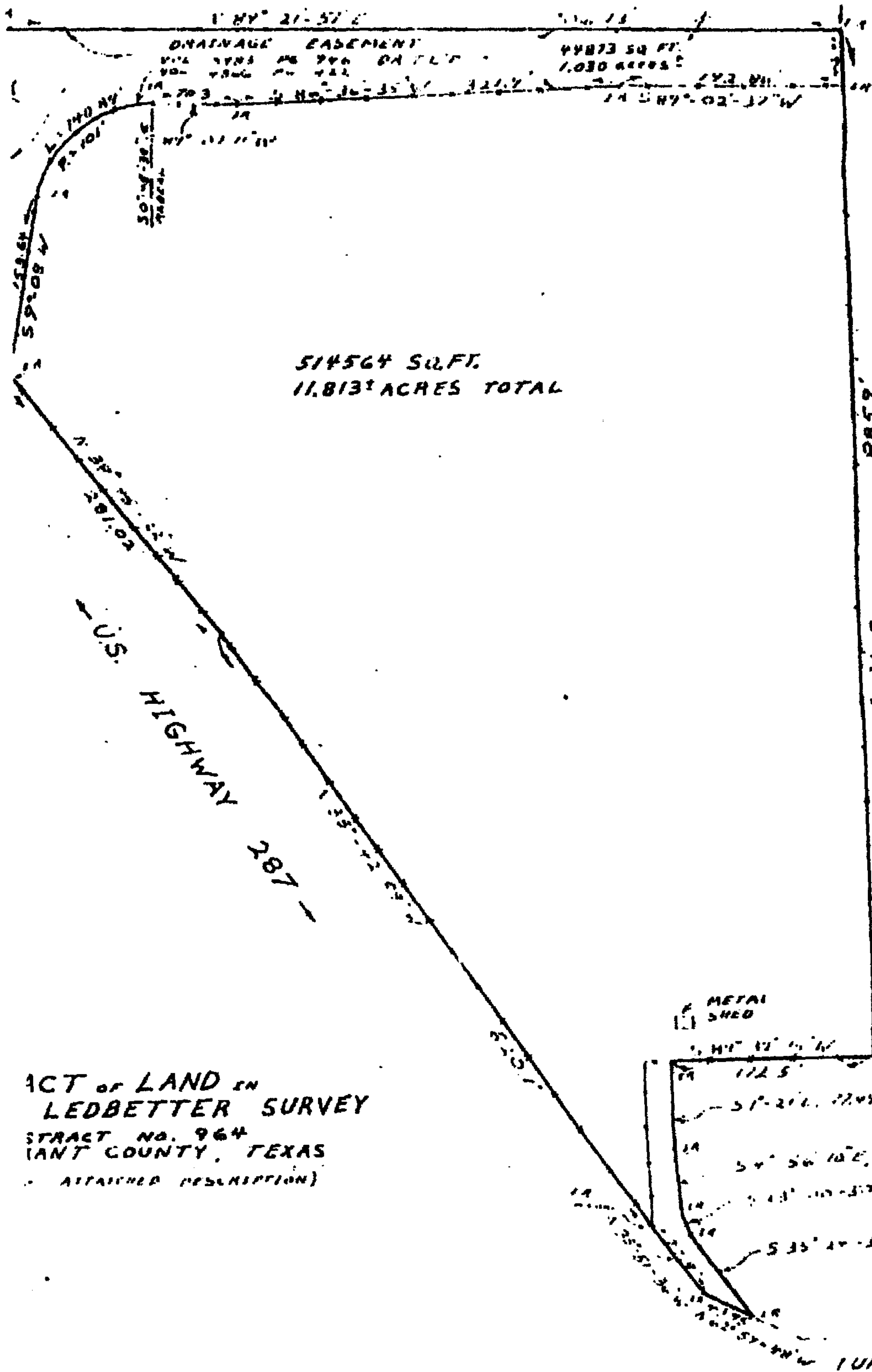
TOPOGRAPHY

Flat.

Electricity, Telephone, and Natural Gas are all available on the Subject Property.

W. R. Rose
Investments, Inc.

5440 Harvest Hill, Suite 250 • Dallas, Texas 75230
(214) 954-1100 • Fax (214) 954-0011



ACT of LAND IN
 LEDBETTER SURVEY
 TRACT NO. 964
 (ANT COUNTY, TEXAS
 (ATTACHED DESCRIPTION)

Surveyed on the ground, under a
 supervision on

SURVEY
 REGISTERED FOR
 N A H